

CRIF study on the demise of shops in Switzerland – just under 32,000 shops have disappeared in the past 10 years

Zurich, 10th December 2019 – **Since 2009, almost 32,000 stores in Switzerland have had to close, most of them clothing stores. The canton of Ticino is showing the highest growth in retail sales, while most cantons are recording a declining number of stores.**

31,394 shops have disappeared in Switzerland since 2009, with the highest number going out of business in 2011 (3,200) and 2012 (3,262). 28,637 new shops were opened over the same ten-year period, which represents a net loss of 2,757 units. The shop-based retail industry is shrinking.

If we compare the closures with the number of newly-opened retail outlets, we can see that growth was negative in the years from 2009 to 2015. More shops were closed than were set up during this period. 2016 saw a small recovery, while more new shops were also opened again in 2017 and 2018. In 2019, however, there was another sharp rise in closures compared with new shop openings.

Clothes shops are the most likely to close

Most of the closures during this reporting period occurred in clothing shops (2,026), newsagents (1,719), specialist retail food outlets (1,420), retailers of IT equipment and software (1,375), shops selling sports goods (1,084) and retail outlets for flowers and plants (1,004).

Art trade in the ascendant

At the same time, new specialist shops have also opened over the past ten years. Most were newsagents (2,135), clothing shops (1,966), specialist retail food outlets (1,788), florists (1,421), art dealers (1,058) and shops selling sports goods (996).

Fewer computer shops

A comparison between closures and new openings reveals that computer shops recorded the most significant decline, with over 50% fewer new set-ups. Sports and clothing shops also reported negative growth. On the other hand, there are frequent openings of shops selling flowers, specialist retail food outlets and kiosks.

Almost 30% of newly-opened shops are later closed again

Many newly-opened shops disappear again very quickly. Of the 28,637 shops newly opened over the past 10 years, 29.8% subsequently closed. A fifth of these shops had already closed by the end of their first year, while 17.6% had closed after 2 years.

Ticino has the highest growth

Over the last ten years, most closures occurred in the Cantons of Zurich (4,432), Vaud (4,341) and Bern (3,742) – but they are also the Cantons with the greatest number of new openings: Zurich (4,354), Vaud (3,271) and Bern (2,655).

A comparison between closures and openings produces a different picture. The Canton of Ticino demonstrates the highest level of net growth in the number of retail shops, followed by Lucerne, Aargau, Freiburg and Schwyz. The Cantons of Bern and Vaud report a deficit of over 1000 shops, all of which have gone out of business.

About the survey process

In this survey, we took account of all those retail trading shops that were entered into the Commercial Register, and had either been closed or were newly opened over the years between 2009 and 2019.

About CRIF Ltd

CRIF Ltd is Switzerland's leading provider of information services for businesses and private individuals. The company offers solutions for identification, credit screening and fraud prevention, for credit risk and address management and for digitalisation and predictive analytics projects on behalf of businesses and financial institutions. CRIF AG is part of the CRIF credit reference agency group, which operates globally and is based in Bologna, Italy. This group now employs 4,700 experts, incorporates 70 companies and is active in over 30 countries on four continents

The full analysis can be requested from presse.ch@crif.com.

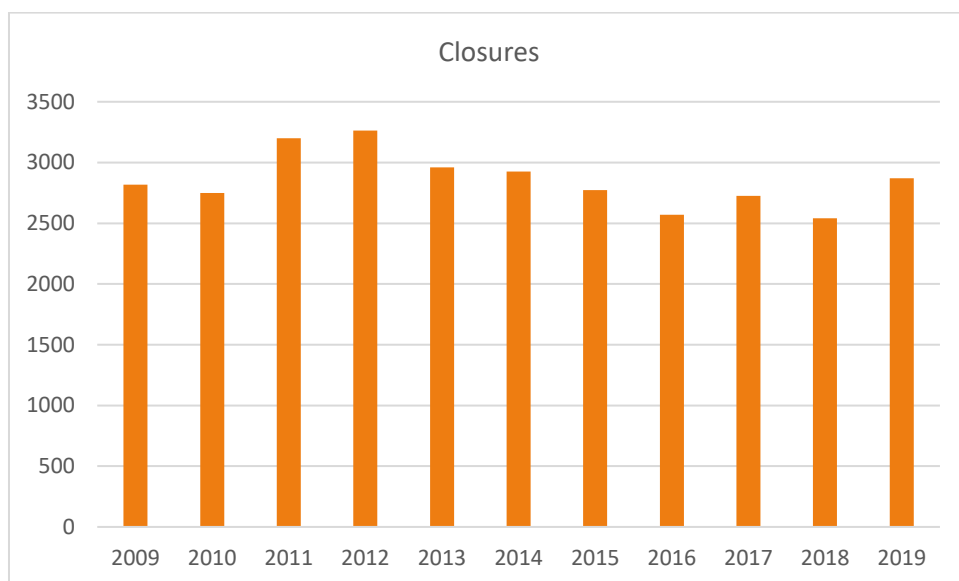
Press contact:

CRIF AG, Heidi Hug

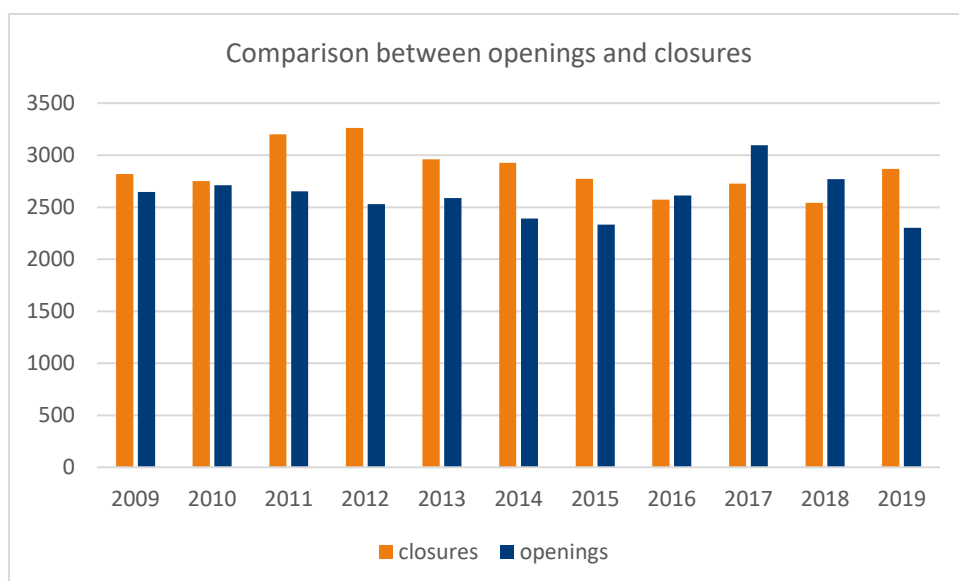
079 251 46 17

www.crif.ch

Number of closures, 2009 to 2019



Comparison between openings and closures



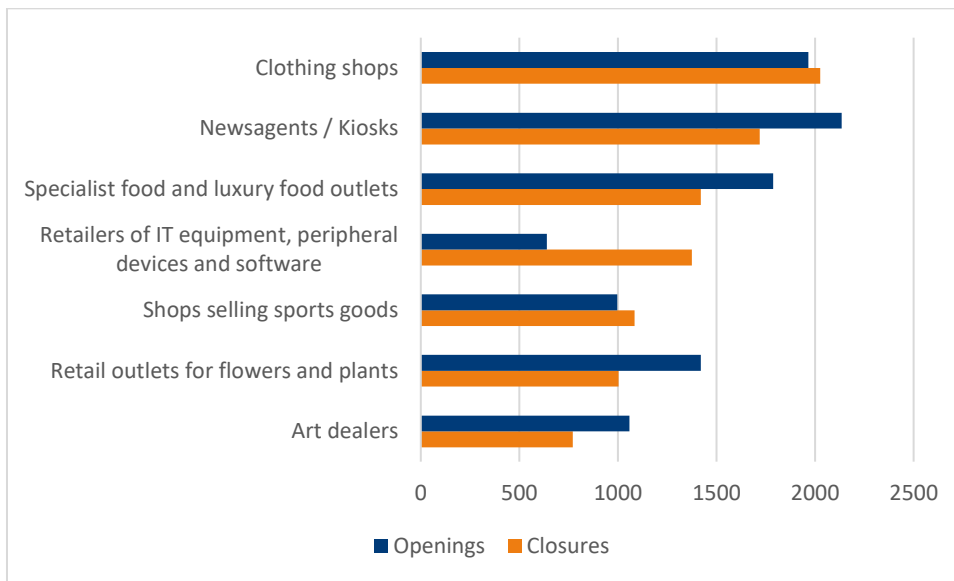
The type of shops that close most frequently

1. Clothing shops (2026)
2. Newsagents / Kiosks (1719)
3. Specialist food and luxury food outlets (1420)
4. Retailers of IT equipment, peripheral devices and software (1375)
5. Shops selling sports goods (1084)
6. Retail outlets for flowers and plants (1004)

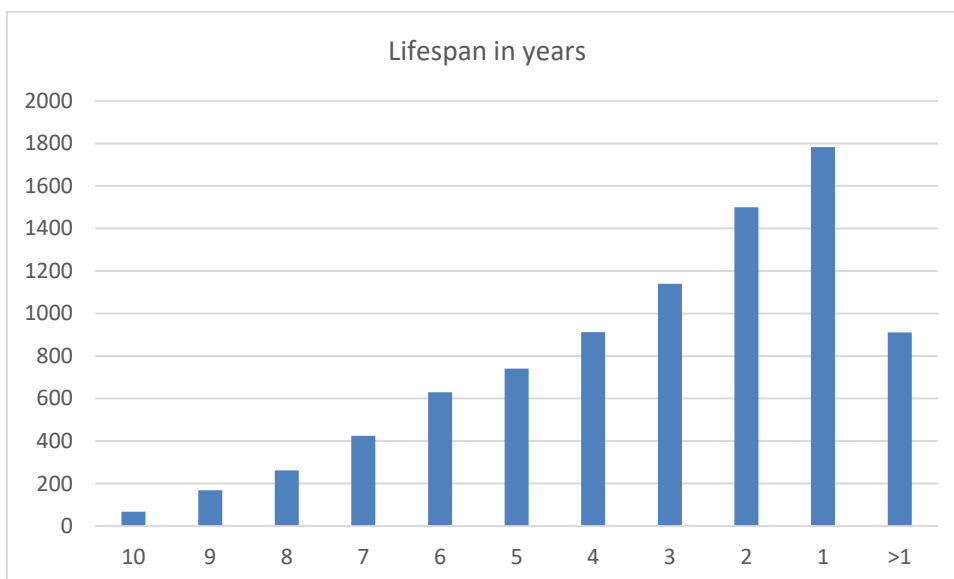
The specialist retailers that open most frequently

1. Newsagents / Kiosks (2135)
2. Clothing shops (1966))
3. Specialist food and luxury food outlets (1788)
4. Retail outlets for flowers and plants (1421)
5. Art dealers (1058)
6. Shops selling sports goods (996)

Comparison between openings and closures

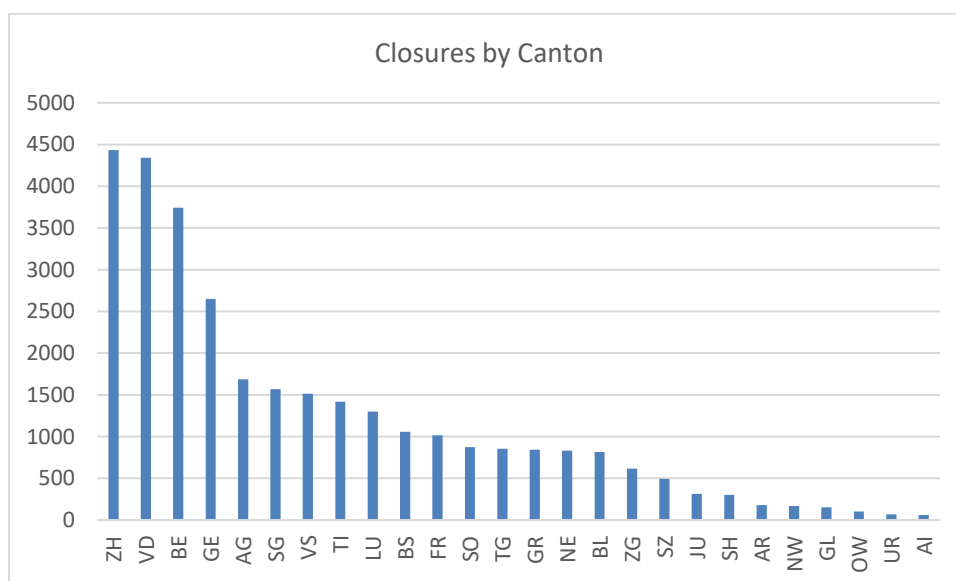


Lifespan of newly-opened retail shop outlets



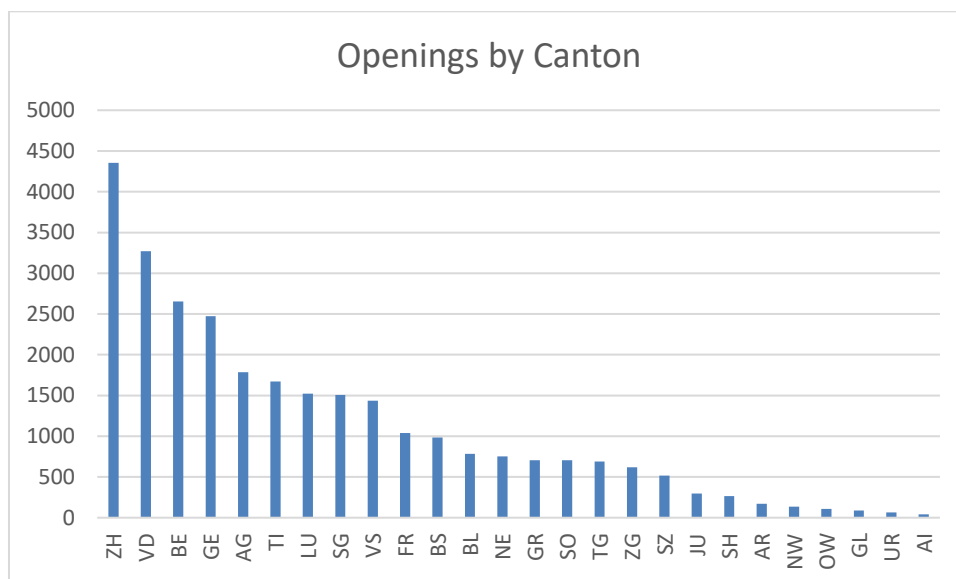
Closures by Canton

	2009	2010	2011	2012	2013	2014	2015	2016	2017	2018	2019	Total
ZH	437	391	551	499	372	366	345	335	376	345	415	4432
VD	557	433	440	412	303	288	284	299	421	483	421	4341
BE	248	256	340	412	368	467	396	354	322	264	315	3742
GE	202	235	307	265	318	263	210	229	222	198	202	2651
AG	154	132	166	144	215	163	148	128	143	148	145	1686
SG	120	139	143	183	129	146	168	161	114	127	139	1569
VS	108	137	122	153	150	166	193	103	153	113	115	1513
TI	107	110	115	123	100	137	115	116	167	133	195	1418
LU	143	140	148	150	97	102	124	85	97	115	99	1300
BS	89	108	115	103	92	81	87	101	90	93	100	1059
FR	79	93	103	92	85	99	76	81	96	65	146	1015
SO	70	64	93	84	110	76	80	81	72	57	86	873
TG	65	63	79	65	144	145	96	57	53	39	48	854
GR	70	76	91	108	66	70	79	84	61	60	78	843
NE	76	67	80	128	83	64	71	61	57	63	82	832
BL	81	93	85	81	78	70	71	99	63	44	49	814
ZG	70	55	47	75	78	57	57	50	43	34	51	617
SZ	37	38	43	45	41	46	47	41	50	39	67	494
JU	26	29	29	29	39	24	28	16	26	29	38	313
SH	29	21	35	31	27	28	29	31	34	12	26	303
AR	12	20	20	23	15	7	16	14	16	21	14	178
NW	9	15	12	16	12	21	17	26	9	13	17	167
GL	13	7	10	16	12	16	14	9	17	25	12	151
OW	8	14	13	9	9	12	10	2	13	8	5	103
UR	5	3	5	13	11	9	8	3	4	5	1	67
AI	3	11	8	3	5	3	3	5	7	8	3	59
Total	2818	2750	3200	3262	2959	2926	2772	2571	2726	2541	2869	31394



Openings by Canton

	2009	2010	2011	2012	2013	2014	2015	2016	2017	2018	2019	Total
ZH	402	412	389	408	432	312	347	408	477	415	352	4354
VD	335	291	301	291	290	256	264	290	368	334	251	3271
BE	244	264	260	244	235	234	208	236	263	243	224	2655
GE	211	227	254	204	238	225	212	225	240	250	185	2471
AG	141	168	172	156	136	166	134	174	220	167	152	1786
TI	135	161	137	169	155	168	141	163	145	173	123	1670
LU	137	137	144	125	139	120	131	129	172	165	125	1524
SG	139	151	144	111	128	103	132	151	153	151	142	1505
VS	147	116	128	136	157	128	112	110	162	130	109	1435
FR	97	105	100	98	82	82	84	95	121	89	85	1038
BS	92	102	68	75	68	99	106	93	116	86	80	985
BL	77	91	67	67	73	65	71	67	78	73	54	783
NE	84	62	77	54	74	63	58	69	81	82	47	751
GR	73	71	70	79	59	50	59	59	62	58	65	705
SO	62	61	77	47	76	59	59	54	80	67	62	704
TG	67	58	55	67	64	66	43	66	79	52	74	691
ZG	56	64	49	51	41	47	43	61	82	72	53	619
SZ	42	53	47	40	37	50	41	58	60	53	36	517
JU	26	33	34	23	23	22	19	21	44	25	26	296
SH	28	29	22	25	19	29	19	21	34	21	18	265
AR	14	21	20	11	18	10	18	12	18	17	13	172
NW	14	12	10	10	10	14	10	15	11	18	10	134
OW	7	9	11	12	11	10	8	9	16	10	6	109
GL	6	9	5	11	12	4	9	13	5	9	7	90
UR	6	3	7	10	5	8	4	7	7	7	2	66
AI	3	2	6	5	6	2	2	8	3	2	2	41
Total	2645	2712	2654	2529	2588	2392	2334	2614	3097	2769	2303	28637



Net growth in the last 10 years

